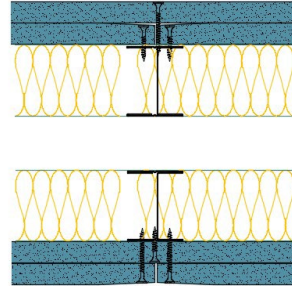


TWI50-K-60(2x50)(200) - SPEEDLINE System Data Sheet - Version V1 (24-10-23)

Twin SPEEDLINE 50mm 'I' Stud Partition @600mm Ctrs, with 2x Knauf 15mm Soundshield Plus each side, 50+50mm APR



System Performance Breakdown

Fire Resistance:

BS476 Part 22:1987:

Test Ref & Date or Applied Ref & Report:

Max Height:

Thickness:

Duty Grade: BS 5234: Part 2:1992:

Sound Insulation:

120/120 Minutes (Integrity/Insulation).

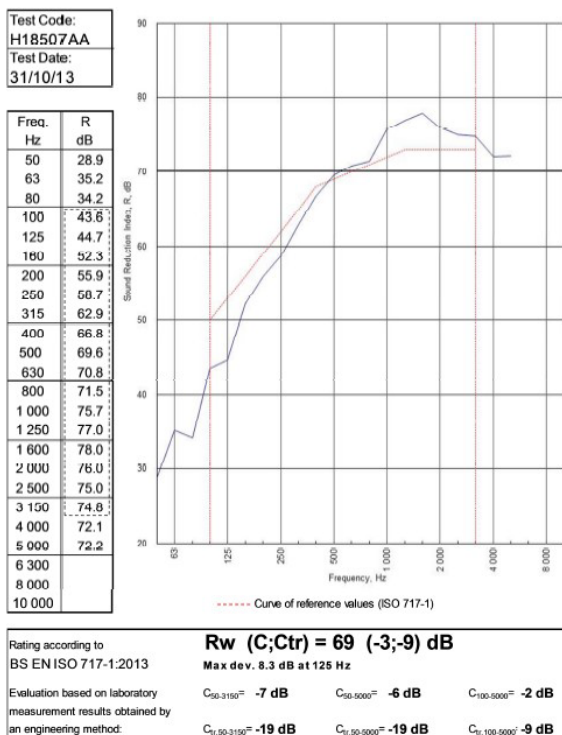
BMT/FEP/F14077 - BRE Report P102396-1011B

Refer to Speedline Specification Clause

200 mm. (At Base Track, Excluding Finishes)

Severe - Annexes A-F

69 R_wdB, -9C_{tr} Date Tested or Assessed Against - 31/10/2013



TESTED AT ONE OF THE UKAS ACCREDITED LABORATORIES BELOW

B.T.C (H-Ref on Graph)

B.R.E

AIRO

S.R.L

Customer: Metsec plc Hepsec Division

BTC 18507A: Page 10 of 13

